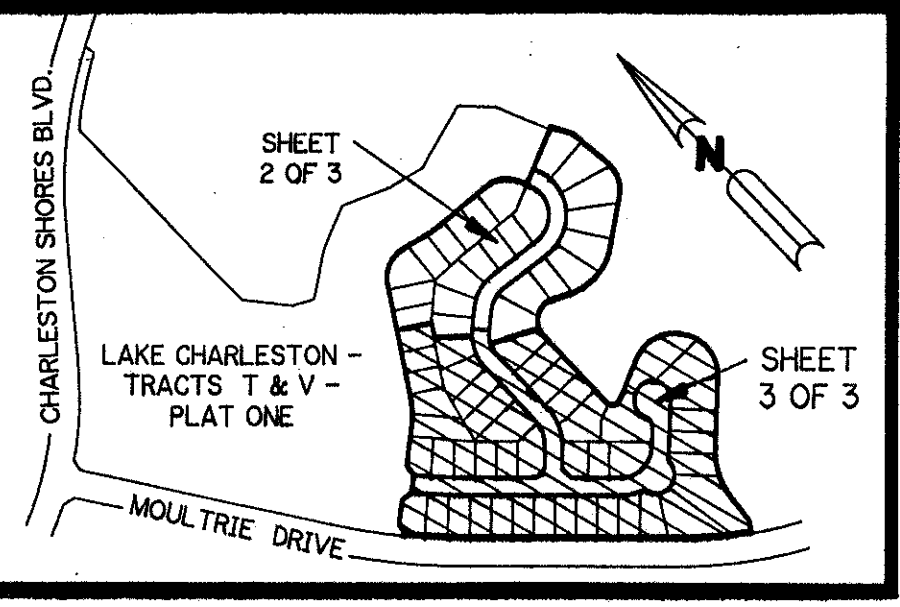


A PART OF LAKE CHARLESTON PLANNED UNIT DEVELOPMENT

LAKE CHARLESTON - TRACTS T & V - PLAT TWO

BEING A REPLAT OF A PORTION OF TRACTS T AND V OF LAKE CHARLESTON PLAT NO.3 AS RECORDED
IN PLAT BOOK 62, PAGES 55-68, PUBLIC RECORDS OF PALM BEACH COUNTY, FLORIDA
SECTION 9, TOWNSHIP 45 SOUTH, RANGE 42 EAST
PALM BEACH COUNTY, FLORIDA



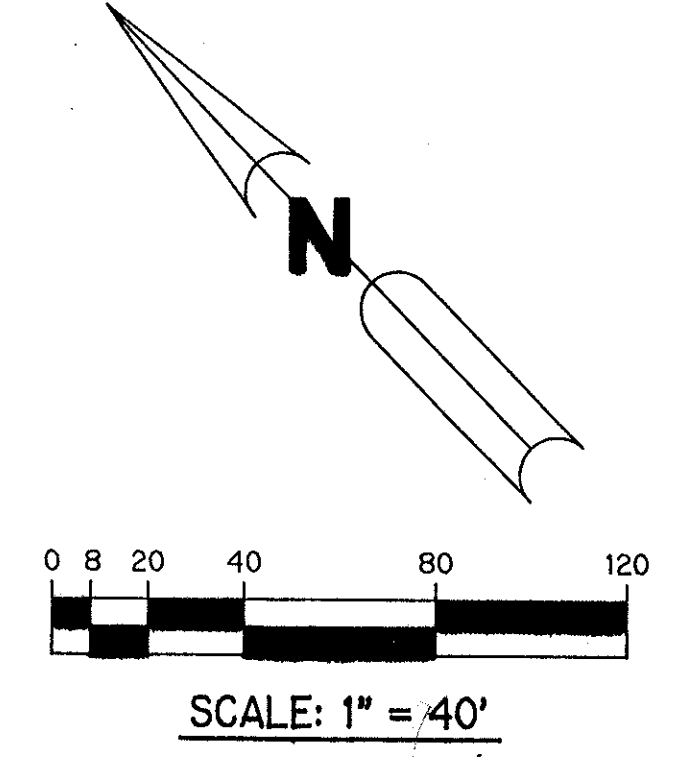
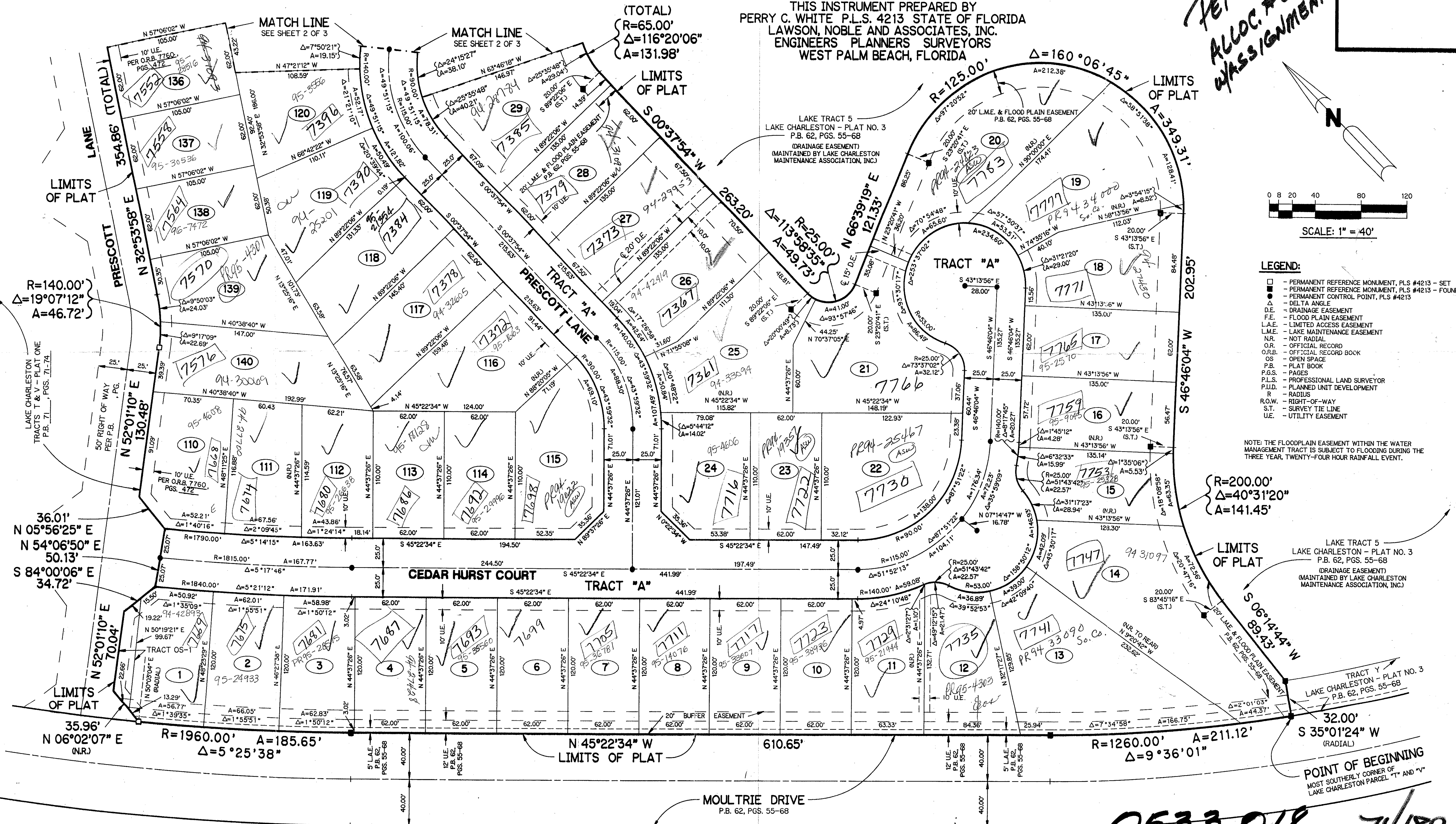
KEY MAP
N.T.S.

SHEET 3 OF 3

OCTOBER, 1993

THIS INSTRUMENT PREPARED BY
PERRY C. WHITE P.L.S. 4213 STATE OF FLORIDA
LAWSON, NOBLE AND ASSOCIATES, INC.
ENGINEERS PLANNERS SURVEYORS
WEST PALM BEACH, FLORIDA

*PET. 86-96
ALLOC. #0012
ASSIGNMENT LETTER*



- LEGEND:**
- PERMANENT REFERENCE MONUMENT, P.L.S. #4213 - SET
 - PERMANENT REFERENCE MONUMENT, P.L.S. #4213 - FOUND
 - PERMANENT CONTROL POINT, P.L.S. #4213
 - Δ DELTA ANGLE
 - D.E. DRAINAGE EASEMENT
 - F.E. FLOOD PLAIN EASEMENT
 - L.A.E. LIMITED ACCESS EASEMENT
 - L.M.E. LAKE MAINTENANCE EASEMENT
 - N.R. NOT RADIAL
 - O.R. OFFICIAL RECORD
 - O.R.B. OFFICIAL RECORD BOOK
 - OS OPEN SPACE
 - P.B. PLAT BOOK
 - P.G.S. PAGES
 - P.L.S. PROFESSIONAL LAND SURVEYOR
 - P.L.D. PLANNED UNIT DEVELOPMENT
 - R RADIUS
 - R.O.W. RIGHT-OF-WAY
 - S.T. SURVEY TIE LINE
 - U.E. UTILITY EASEMENT

NOTE: THE FLOODPLAIN EASEMENT WITHIN THE WATER MANAGEMENT TRACT IS SUBJECT TO FLOODING DURING THE THREE YEAR, TWENTY-FOUR HOUR RAINFALL EVENT.

SUBDIVISION * TRACT T & V
BOOK 71 PAGE 187 FLOOD MAP # 188A
FLOOD ZONE B ZONING RTS
QUAD # 49 ZIP CODE 33437
SE 86-96
PUD NAME LAKE CHARLESTON

TAZ 439

0533-018 7/189

LAKE CHARLESTON - TRACTS T & V - PLAT TWO